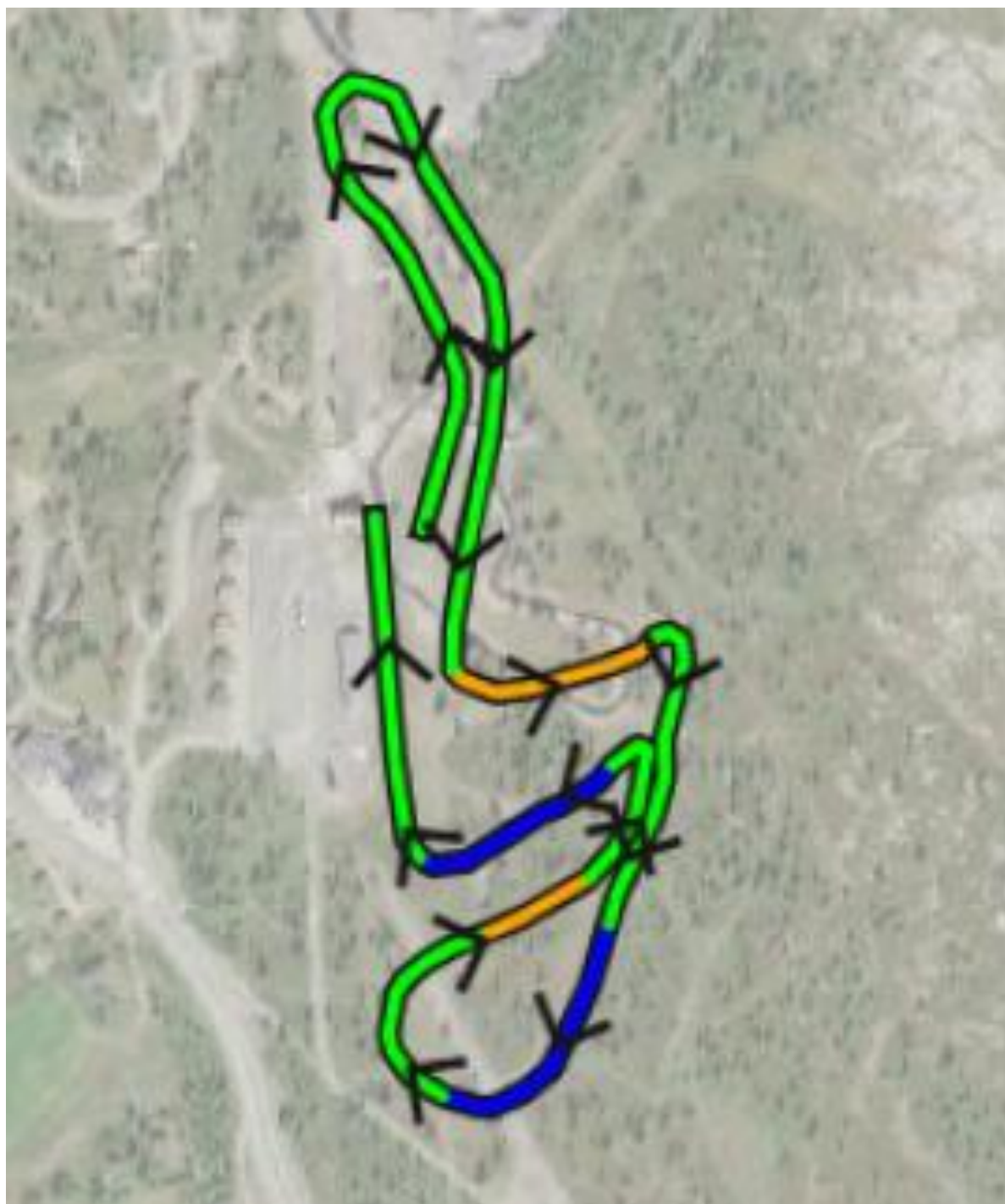


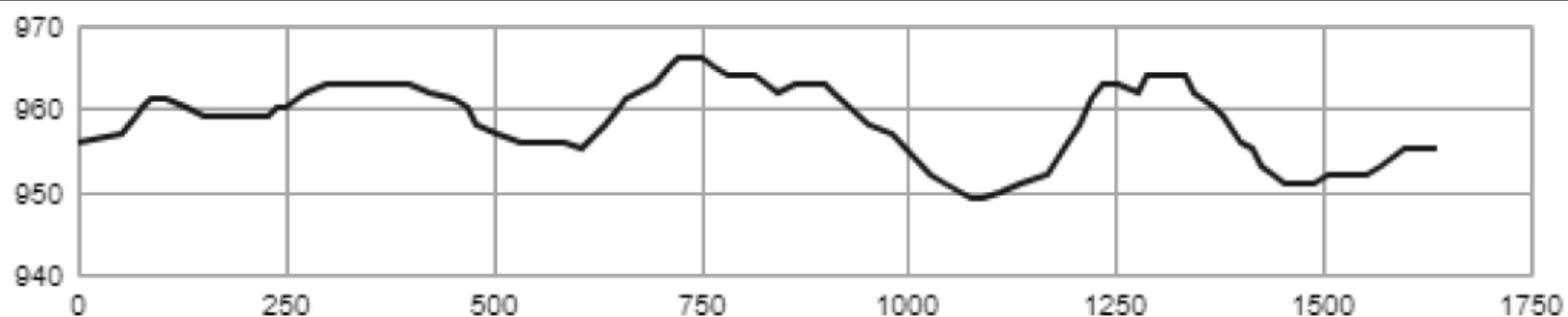
Peer Gynt Stadion - Gålå



Sprint Men Senior Friday 21/3



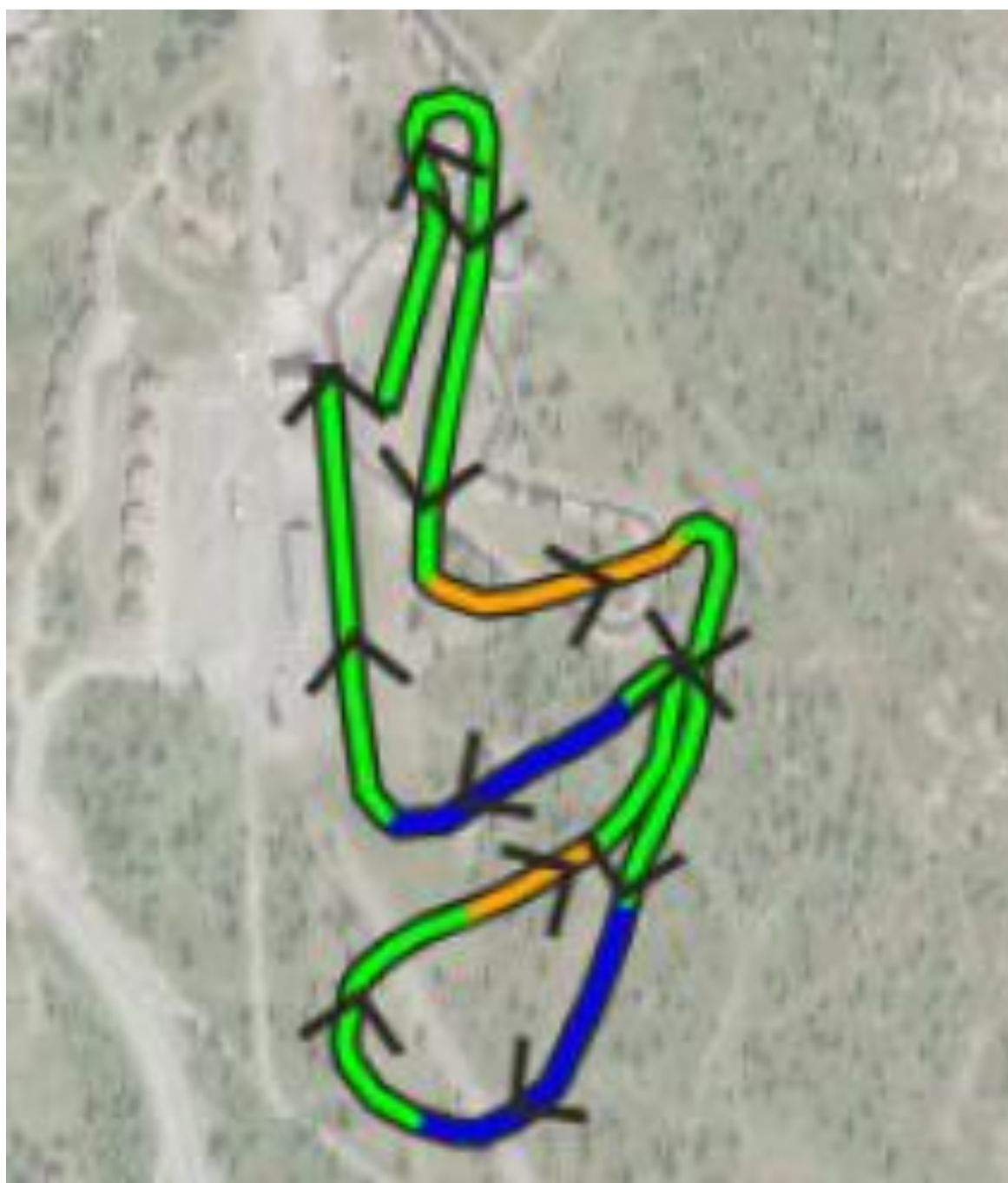
Course length:	1,637m	Height difference (HD):	17m	Lowest point:	949m
Course category:	D	Maximum climb (MC):	11m	Highest point:	966m
		Total climb (TC):	41m		



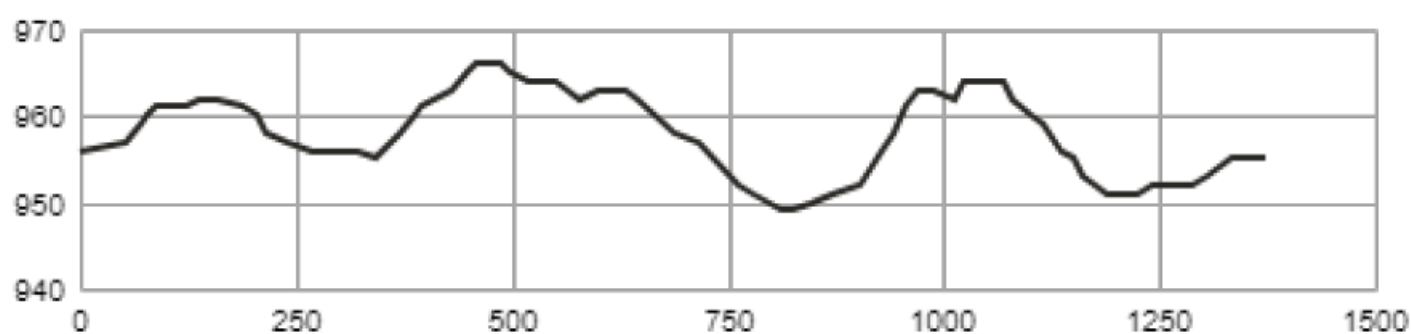
Peer Gynt Stadion - Gålå



Sprint Women Senior / Men Junior /
Women Junior Friday 21/3



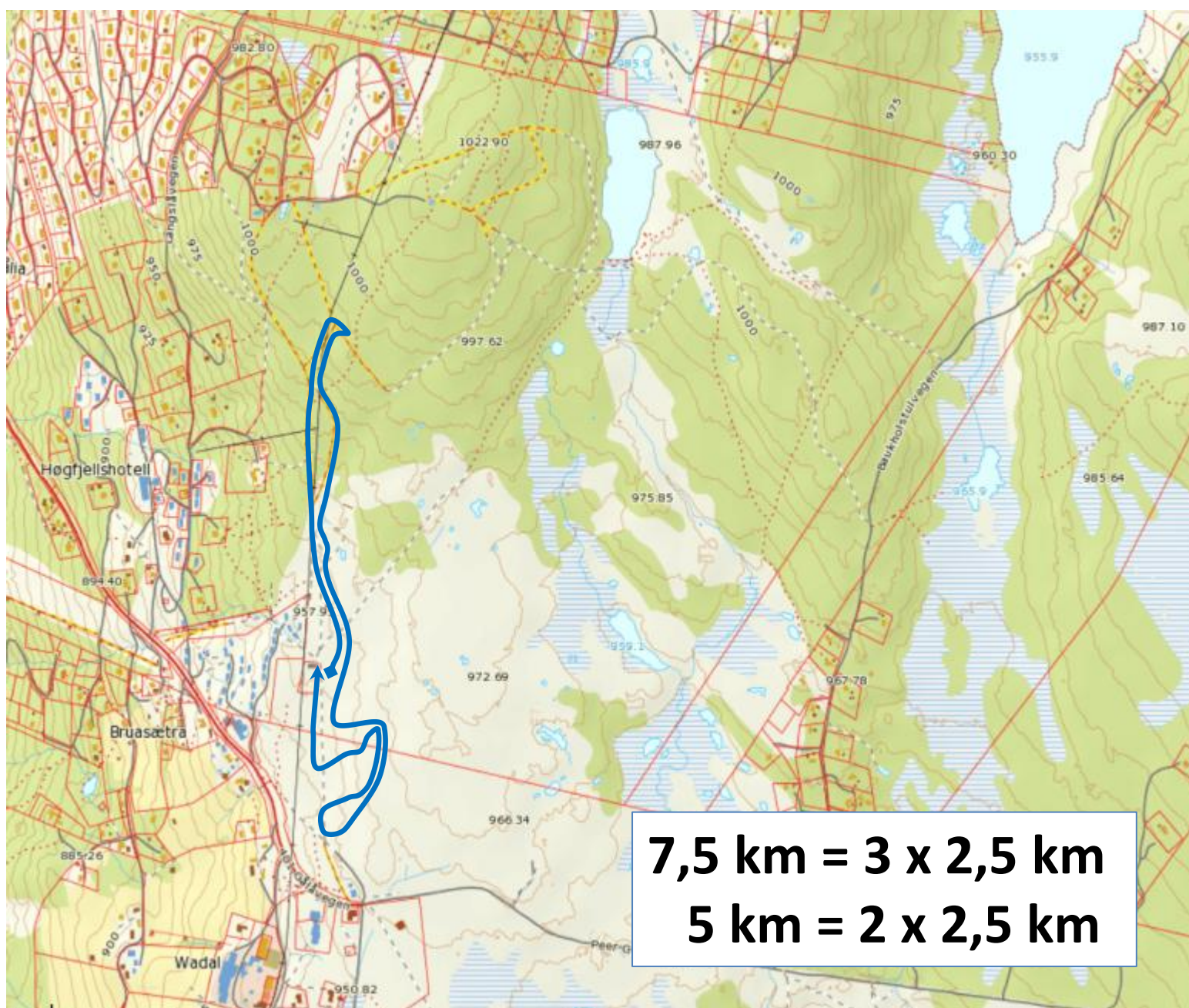
Course length:	1,372m	Height difference (HD):	17m	Lowest point:	949m
Course category:	D	Maximum climb (MC):	11m	Highest point:	966m
		Total climb (TC):	38m		



Peer Gynt Stadion - Gålå

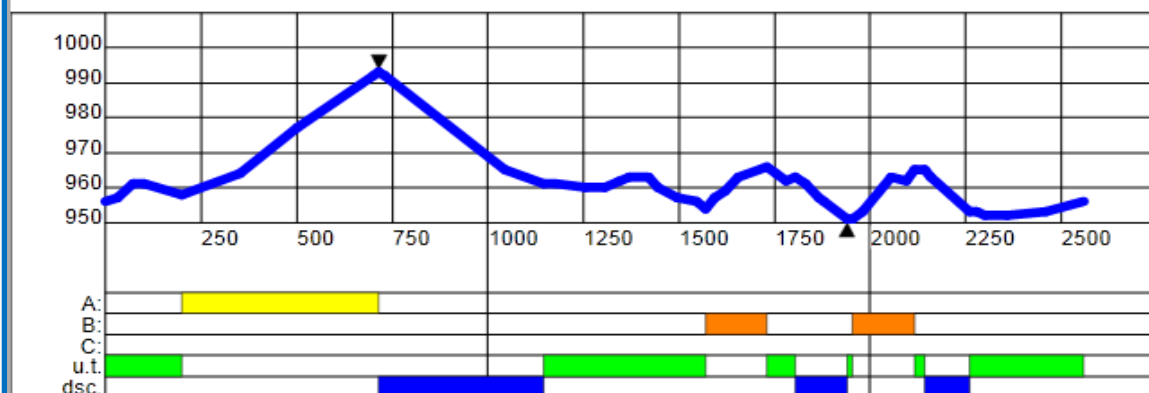


Nordic Combined Friday 21/3



Gålå 2,5 km blue

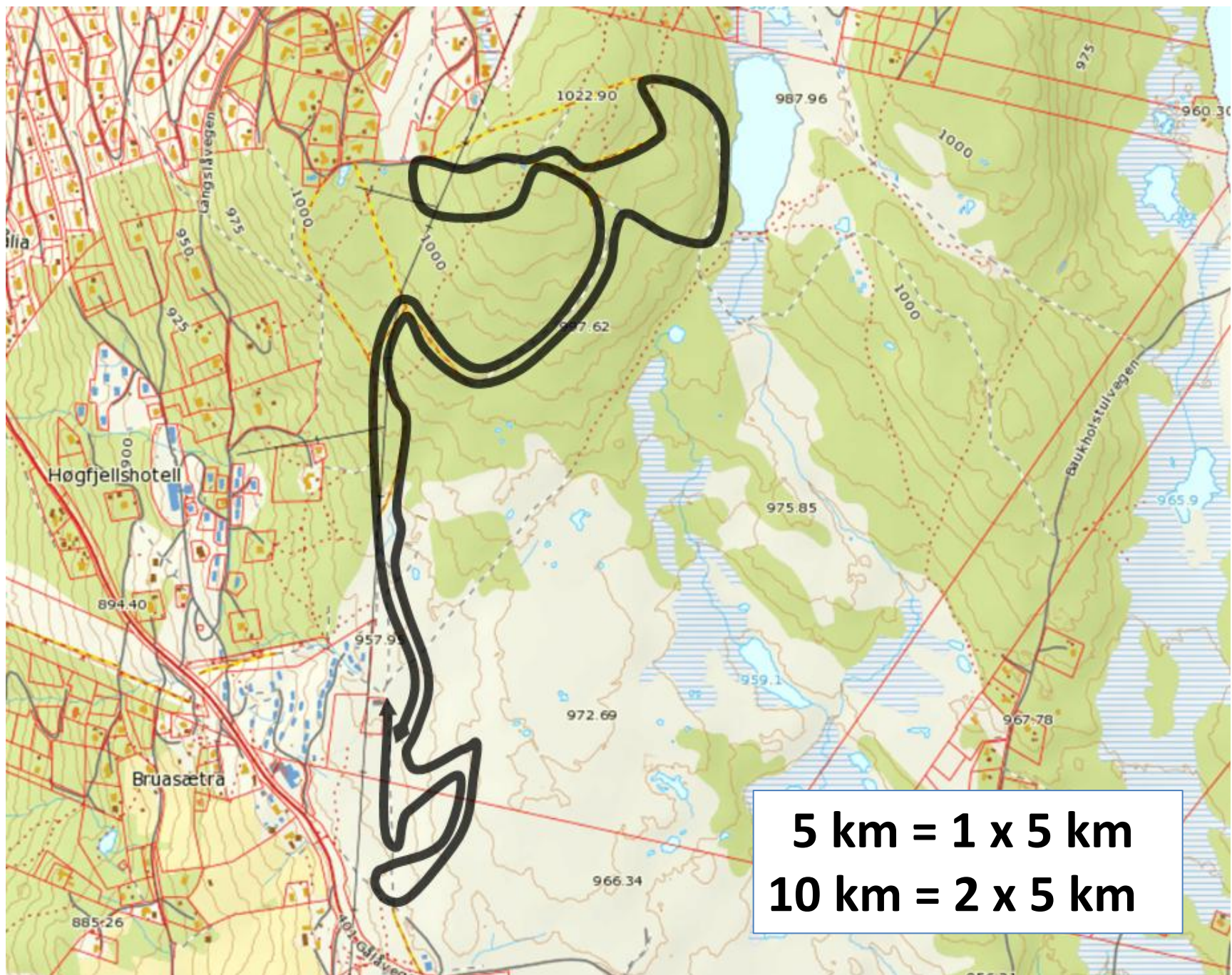
	Course length:	2560m	Height Difference (HD):	42m	Lowest point:	951m
	Category:	D	Maximum Climb (MC):	35m	Highest point:	993m
	Competition Level:	COC/FIS	Total Climb (TC):	75m		



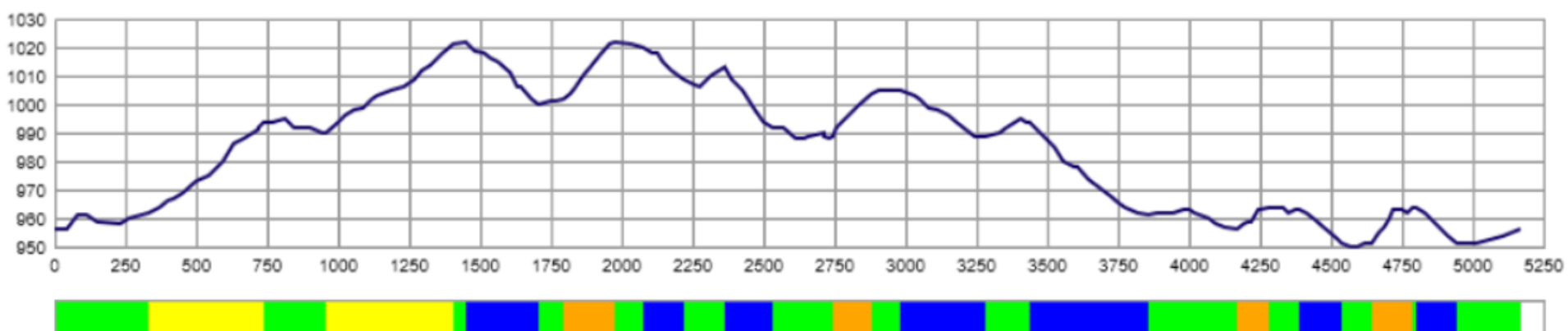
Peer Gynt Stadion - Gålå



Men/Women sr/jr Saturday 22/3



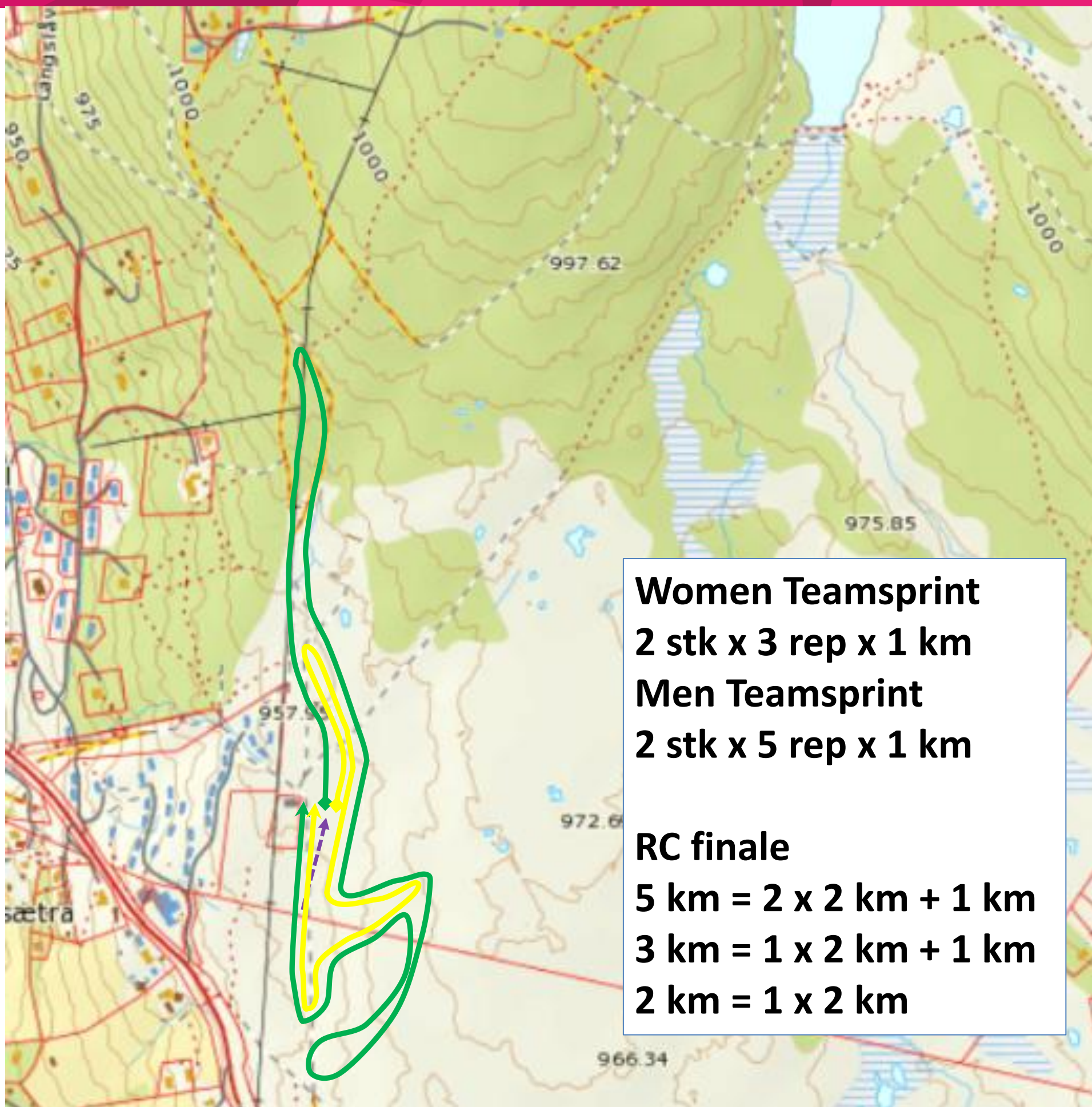
Course length:	5,167m	Height difference (HD):	72m	Lowest point:	950m
Course category:	D	Maximum climb (MC):	32m	Highest point:	1,022m
		Total climb (TC):	159m		



Peer Gynt Stadion - Gålå



Nordic Combined Saturday 22/3



Rennløyper:

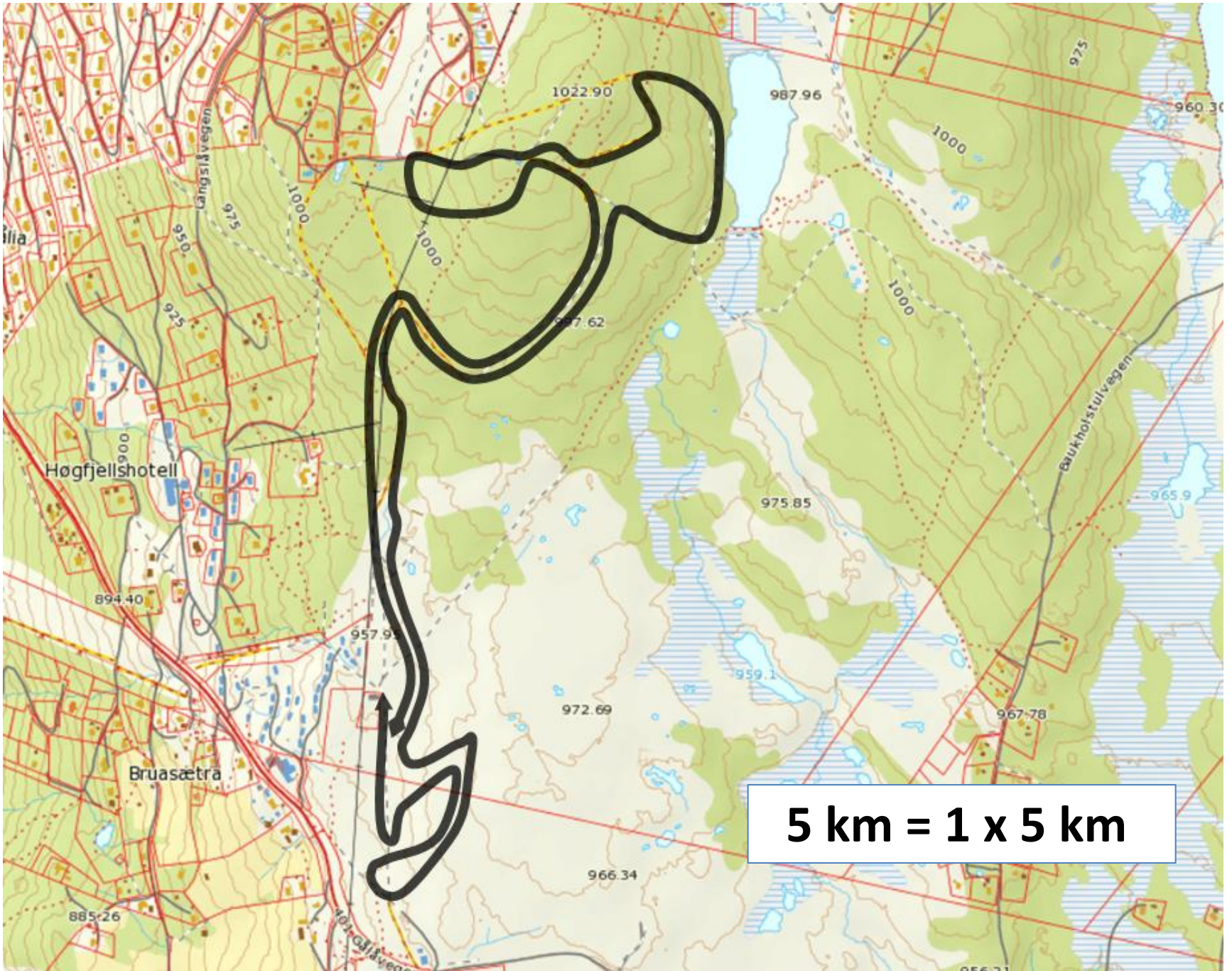
Gullløype = 1,0 km

Grønn løype = 2,0 km

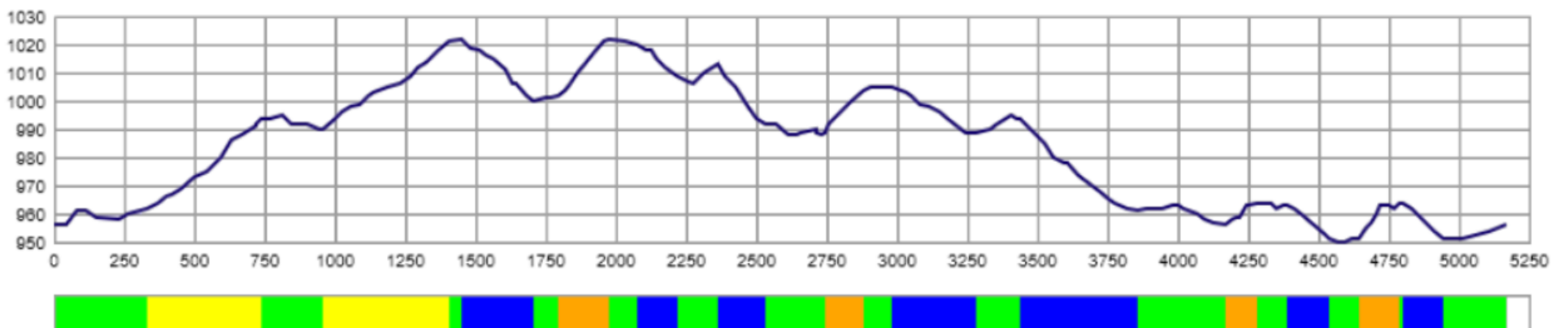
Peer Gynt Stadion - Gålå

Gålårennet 22/3

Jenter og Gutter 15 og 16 år



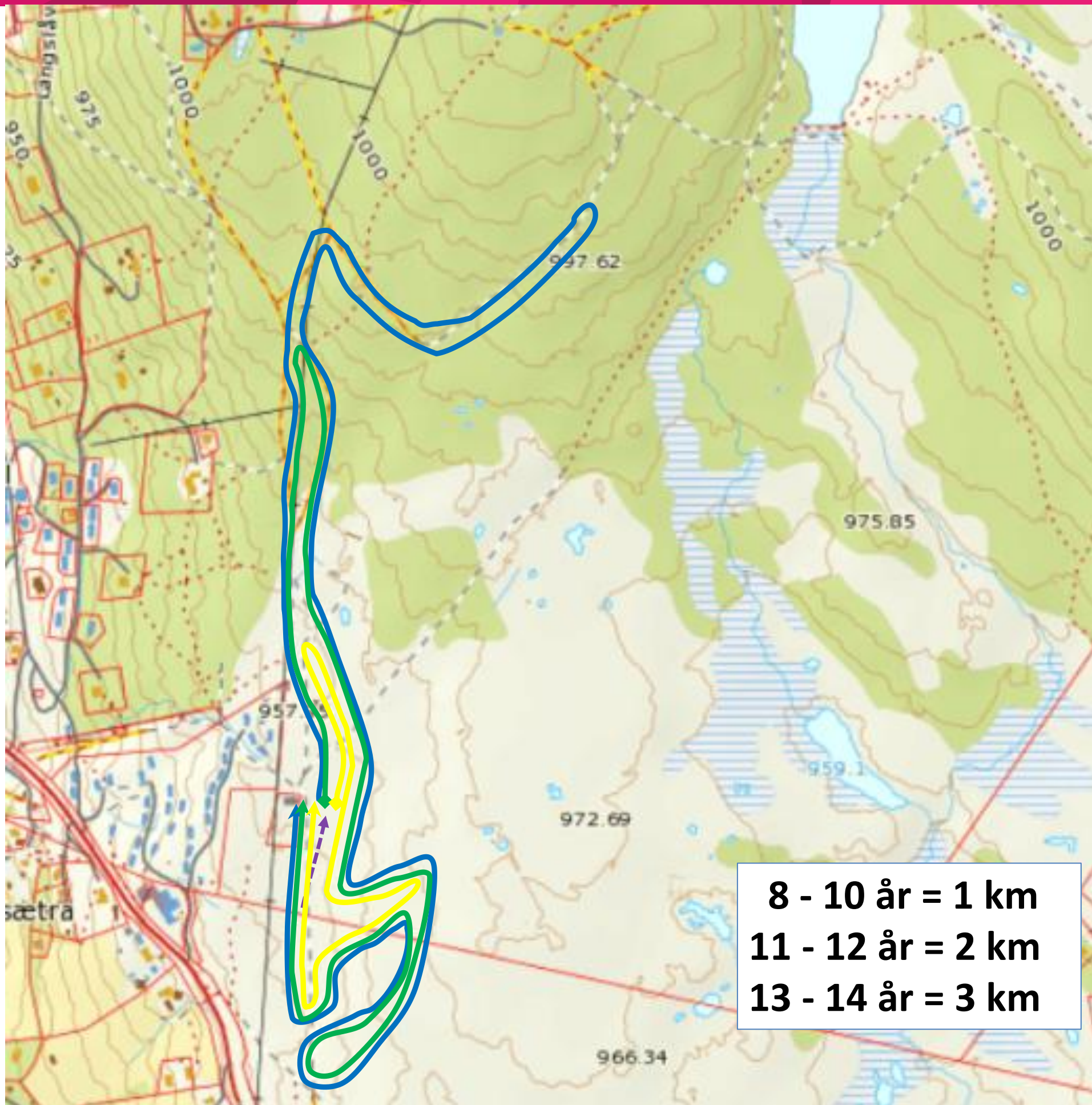
Course length:	5,167m	Height difference (HD):	72m	Lowest point:	950m
Course category:	D	Maximum climb (MC):	32m	Highest point:	1,022m
		Total climb (TC):	159m		



Peer Gynt Stadion - Gålå

Gålårennet 22/3

Jenter og Gutter 8 – 14 år



Rennløyper:

Gullløype = 1,0 km

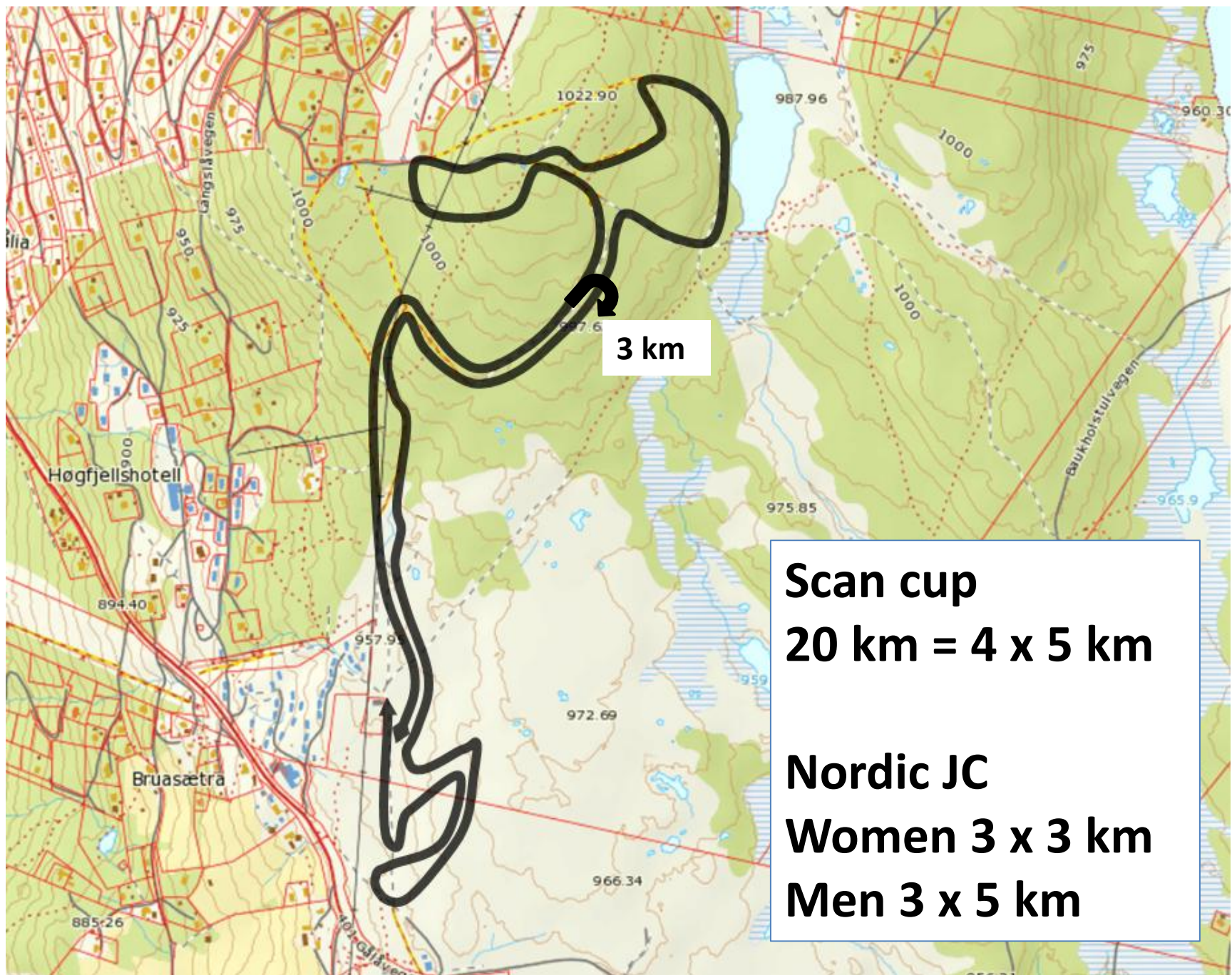
Grønn løype = 2,0 km

Blå løype = 3,0 km

Peer Gynt Stadion - Gålå



Men/Women sr/jr Sunday 23/3



Scan cup
20 km = 4 x 5 km

Nordic JC
Women 3 x 3 km
Men 3 x 5 km

Course length:	5,167m	Height difference (HD):	72m	Lowest point:	950m
Course category:	D	Maximum climb (MC):	32m	Highest point:	1,022m
		Total climb (TC):	159m		

